

Techking Tow Tractor-TK-QY200



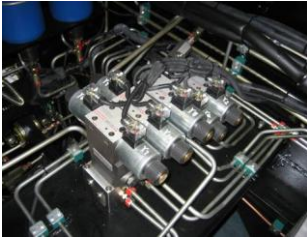
Tow Tractor

The QY200 offers leading performance and design which comply with CAAC and international standards, such as, IATA AHM 905, IATA AHM 910, IATA AHM 913, IATA AHM915, IATA AHM 916, MH/T6017 etc.

● Turning Radius	4119 mm	● Axle Load	
● Ground Clearance	200 mm	Front axle load	13760 kg
● Maximum speed	30 km/hr	Rear axle load	13230 kg
● Wheelbase	2750 mm	Gross vehicle weight	27 t
		● Overall Dimension	
		Length	7260 mm
		Width	2600 mm
		Height	1650 mm
		● Tow Bar Pull	200 KN
		● Towing Capacity	270 t

● **Standard Features:**

- Engine: DEUTZ BF6M1013EC Diesel Engine
- Transmission: FUNK2000, 6 forward, 3 backward
- Tyre: 12.00-24-PR24
- Axle: Kessler LT71PL478
- Fully hydraulic steering
- 4-Wheel driving



● **Suitable for:**

- A300-600, A310-200, A310-300, A321, A318, A319,
- A320, A330-200, A330-300, An-124, B717, B737, B757
- B767-300, B767-400, B787-3, B787-8, B787-9



Major Dimensions:

