

Model TD38TKT - EXPRESS PASSENGER STAIRWAY



AIRPORT EQUIPMENT SERVICES PTE. LTD.

41 Kallang Pudding Road, #03-10 Golden Wheel Building,
Singapore 349316 Phone: (65) 65421160 Fax: (65) 65421160
Email: aessg@singnet.com.sg Website: www.aessg.com

(Business Registration No: 199400661M)

Products are subject to engineering changes.

SPECIFICATIONS

TD38TKT– EXPRESS PASSENGER STAIRWAY

1.0 General

The TD38TKT is a towable, parallelogram passenger boarding stairway. Stairway height adjustment is made by means of a hydraulic power pack. Stability is provided by four screw jack stabilizers, located on either side of the frame. One 12 volt batteries provide power for illuminating the stairs and platform and for the power pack. A solar battery charger system is included with this unit., which auto charge for the battery in the day time.

2.0 Construction

The stairway chassis frame is constructed of steel tube, to which the step assemblies are attached. The stairway has a rigid axle with 4:00 x 8 solid rubber tires on the plane side, and swivel casters with solid rubber tires on the forward end of the stair. This provides smooth movement when transporting the stairway. The platform floor and steps are constructed of aluminum diamond plate. Modesty panels are constructed of aluminum, with stainless steel handrails. A rubber bumper is located on the front of the platform to protect the aircraft. The stairway is protected by epoxy based primer and polyurethane paint.

3.0 Safety Features

The TD38TKT, Passenger Stairway is equipped with four stabilizer assemblies at the stair corners to stabilize the stairway and keep it locked in place. Stainless steel handrails give the passengers a solid structure to hold on to when boarding or deplaning. Illumination lights are located on the stairway and platform for easy nighttime boarding. Aluminum diamond plate provides a nonskid walking surface.

4.0 Standard Dimensions

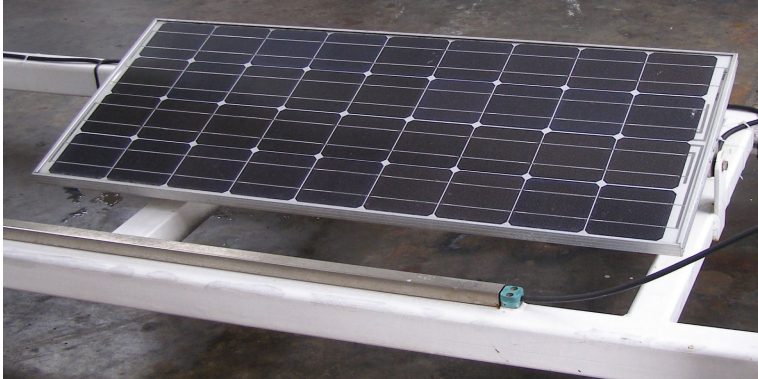
4.1 Step width:	1300mm
4.2 Riser height:	100mm @1800mm 200mm @ 3800mm
4.3 Step depth:	300mm
4.4 Platform length, with landing	1930mm
4.5 Platform width	1400mm
4.6 Overall length	8285mm
4.7 Overall width	2220mm
4.8 Overall height (collapsed)	3520mm
4.9 Shipping weight	1860kg

5.0 Options

- 5.1 Additional paint colors**
- 5.2 Custom placards**
- 5.3 Canopy**
- 5.4 Solar battery**

Products are subject to engineering changes.

Solar Panel used to charge the battery in day time



Hand Hydraulic Pump used to lift up/down the platform



6.0 Aircraft Door Sill Span 1800mm – 3800mm

7.0 Aircraft Compatibility

A318,A-319, A-320, A-321, **B-737, B-757**