



## AIRPORT EQUIPMENT SERVICES PTE. LTD.

41 Kallang Pudding Road, #03-10 Golden Wheel Building,  
Singapore 349316 Phone: (65) 65421160 Fax: (65) 65421160  
Email: aessg@singnet.com.sg Website: www.aessg.com

(Business Registration No: 199400661M)

### Techking Passenger Steps TK-KT380



#### Self-Propelled Passenger Steps

The TK-KT380 offers the leading performance and design which comply with CAAC and International standards, such as, IATA AHM 905, IATA AHM 910, IATA AHM 913, IATA AHM 915, IATA AHM 916, IATA AHM 920, SAE-ARP836A etc.

Driver cab mounted on front for optimum operator visibility.

● <b>Minimum Turning Radius</b>	6400 mm
● <b>Ground Clearance</b>	170 mm
● <b>Maximum speed</b>	45 km
● <b>Wheelbase</b>	3000 mm

#### ● **Standard Features:**

Powered by JMC Diesel Engine  
JMC Manual Transmission  
Hydraulic drum brake  
Tyre: 225/70 R15

#### ● **Operating Dimension**

Minimum platform height	1920 mm
Maximum platform height	3800 mm
Step width	1300 mm

#### ● **Axle Load**

Front Axle Load	3700 kg
Rear Axle Load	1100 kg
Gross Vehicle Weight	4800 kg

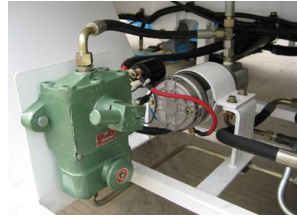
#### ● **Overall Dimension**

Length (retracted)	7210 mm
Width	2378 mm
Height (retracted)	2996 mm

#### ● **Suitable for:**

A300, A310, A320, A340, Concorde  
B727, B737, B757, B767, DC-8, DC-9

Auto leaf spring suspensions with buffer  
Hydraulic power steering  
Manual and Electrical pump for raising stabilizers



**Major Dimensions:**

