

A2085 - Ground power unit / Houchin C690



Description

Model C690 Ground Power Unit, 140 kVA output + 28V DC / TIER3

The C690 is a low noise Ground Power Unit suitable for servicing 400Hz AC and 28V DC electrical systems on all types of aircraft.

Powered by a diesel engine, coupled to a Houchin alternator, the unit is mounted on a monocoque chassis with integral cable trays.

It is protected by a unique sliding weatherproof canopy and is designed for maximum access.

The company's quality procedures are certified to: BS EN ISO 9001:2000

Serial number: 104833

Configuration

Trailer mounted

A rugged monocoque construction in fabricated sheet steel with extensive corrosion protection.

Fifth wheel steering, fitted with leaf springs and four 18x7 pneumatic tyred wheels.

Truck mounted

The unit can be supplied without undergear for mounting on to the customer's choice of vehicle.

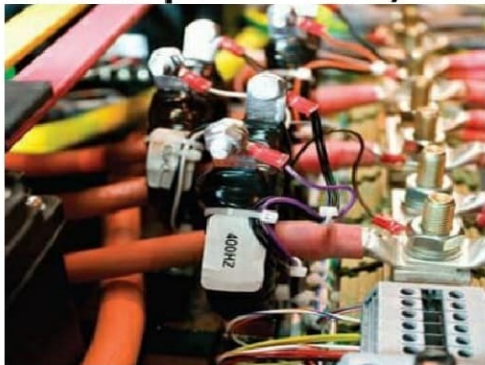
Performance

Model Type	kVA Rating	Continuous Peak Overload kVA	Engine	Cylinders	Engine Type	Fuel Type	Electrical System	Cooling System	Coolant
C690	90	112	Cummins	6	4 Stroke Turbo Charged	Diesel	24 Volt	Tropical Radiator & Fan	Water
C690	100	112							
C690	140	154	Cummins QSB	6					

Features Applying To All Models

Voltage Range	: 115/200 Volts	Transient Recovery	: 0.2 secs.
Phase	: 3	Frequency Regulation	: \pm 2Hz (steady state)
Hz	: 400	Frequency Transient	: \pm 10Hz (load change)
Power Factor	: 0.8 cos \emptyset	Transient Recovery	: 1.0 secs.
Voltage Regulation	: \pm 1% (steady state)	Peak Load	: 110% continuous at 0.8 p.f
Voltage Transient	: \pm 20% (100% load change)		

Ground power unit / Houchin C690



Technical Specification

Electrical Standards

BS 5000 pt, 99, BS 2G219 (ISO 6858), Insulation class 'H' throughout and varnished to provide a moisture-proof protection.

Operating Equipment

Provides rated output at temperatures of between -25° and + 40° and altitudes of up to 1000m ASL. Contact manufacturer for appropriate de-ratings for higher values than those stated.

Generator

Houchin designed and manufactured brushless, synchronous alternator. Revolving field salient pole type with a single bearing. Coupled to the engine flywheel by means of a spring steel disc.

Electrical Controls

On/OFF Pushbuttons, Power 'ON' lamp, Digital instrumentation to read – volts, amps and frequency. Interlock-bypass switch with indicator Excite pushbutton, Panel lamps with switch.

Engine Controls

Start keyswitch, Idle/service switch, Hours counter, Fault display.

Protection

Over voltage, Under voltage, Over frequency, Under frequency, Overload, Low oil pressure, High engine temperature.

Fuel Tank

With sufficient capacity to give approximately 10 hours full load running. Complete with contents gauge.

Output Cable

AC Output cable 7.6m long, complete with a standard 6-pin socket. DC output cable 10m long, complete with a standard 3-pin socket.

Noise Attenuation

Engine	: dBA@3M
Cummins BT	: 84
Cummins BTA	: 87

Testing

All equipment is fully tested, test certificates are available upon request.

Publications

A comprehensive manual is included, containing sections covering general description and operating instructions, service/maintenance, fault diagnosis and overhaul procedures and illustrated part list.

Servicing

The equipment is designed for ease of maintenance and inspection.

Overall Size

Height	: 1663 mm	Width	: 1755 mm
Length	: 3606 mm	Weight	: 2800 Kg